

This document was compiled by the Redruth NDP team from available data sources to provide numerical data about Redruth Parish as part of the evidence base for the NDP document.

It has data on population, deprivation & health, work, travel to work, employment space built, housing stock, housing numbers, expenditure, shopping habits, retail floor space, Town Centre information, including a car park study & education provision. *Some comments on the data are shown in highlighted blue text.*

### **Population**

The Redruth Parish population is estimated to grow by **36%** from 2010 to 2030. In 2010 there were 12,664 people (2011 census). In the 2021 census there were 15,600 people, an increase of **23%** & it is expected to grow to 17,220 (Cornwall Council population estimate) by 2030, an increase of 36%.

This population growth is not evenly spread across Redruth Parish. Redruth North is growing and is anticipated to continue growing at more than twice the rate of the other wards, Redruth Central and Redruth South. See Table 1.

**Table 1: Redruth Parish Population figures and estimates by ward, 2010- 2016.**

**Note:** These figures are not available post 2016.

Year/ Ward	2010	2016	Population change	% change from 2010 figures
<b>Redruth North Population</b> 3 <sup>rd</sup> most deprived Ward in Cornwall, top 10% of UK.	4,376	6,538	+2,162	+49%
<b>Redruth Central Population.</b>	4,154	3,819	-335	-8%
<b>Redruth South Population.</b>	4,134	4,493	+359	+9%
<b>Redruth Parish Total</b>	12,664	14,896	+2,232	+18%
Reference & source	2011 Census	2016 population estimates taken from Cornwall Council website		

**Number of households (2016)**

**5,529**

**Redruth in Hectares**

**731 hectares**

**Density (number of persons per hectare)**

**16.18** (*4 x greater than Camborne & 3 x greater than Pool*).

Reference: The above 3 figures are from EXPERIAN POPULATION & EXPENDITURE DATA & EXTRACT FROM RETAIL PLANNER. Information taken from the Roseworthy Hill Planning Application Information PA18/06111.

The population split is 49% Male/ 51% female in 2021 census.

The age profile in 2021 shows more under 4's at 5.8% than the UK average of 5.4%.

In every age group over 50, Redruth has more people than the UK average.

Redruth has fewer people than the national average in every age group from 10 – 49.

### **Deprivation & Health**

Redruth North Ward is in the top 10% deprived wards in the Country. Table 2 gives evidence.

**Table 2: Evidence of Deprivation (2016 figures)**

Criteria	Redruth %	Cornwall %
% of children in out of work households	16%	12.1%
% of children in lone parent households	27.6	23.6
% of children living in poverty	18.8	14.8

Redruth Parish scores **30.6** on the “Access to health Assets and Hazards” Index compared to **23.2** for England. This index measure how “healthy” a neighbourhood is by looking at accessibility and geographic determinants of health. The lower the score the healthier. Source: Access to Healthy Assets & Hazards (AHAH)

3,453 (22.1%) have a limiting long-term illness in Redruth Parish compared with 17.3% across England

28.5% of Reception year children were classed as overweight or obese (South West 22%, England 22.6%).

34.7% of Year 6 children were classed as overweight or obese (South West 31.7%, England 35.8%).

Disability figures in the 2021 census show that 22.1% are disabled under the equality act (UK average of 17.3%).

**Numbers of Patients registered at a GP Practice April 2013 – January 2020** (Taken from CC’s website).

From 2013 - 2019, patient numbers have increased by 5%. This equates to a 1% increase per annum. The figures since January 2020 are not currently available, but if this increase continues at this level, that would be a 20% in patient numbers from 2010 – 2030.

Practice	April 13	Oct 13	Oct 14	Oct 15	Oct 16	Oct 17	Oct 18
Clinton	4135	4121	4148	4070	4430	4553	4618
Manor	11645	11559	11527	11362	11768	11863	11858
Totals	15,780	15,680	15,675	15,432	16,198	16,416	16,476
Change	n/a	- 100	- 105	- 348	+418	+636	+696
% change	n/a	- 0.06%	- 0.06%	-2.2%	+2.6%	+4%	+4.4%

Practice	Jan 2019	Apr 2019	Jul 2019	Oct 2019	Jan2020
Clinton	4649	4663	4678	4707	4678
Manor	11851	11864	11904	11925	11955
Totals	16,500	16,527	16,582	16,632	16,633
Change	+720	+747	+802	+852	+853
% change	+4.6%	+4.7%	+5%	+5.4%	+5.4%

Table 3 Numbers of patients registered at a GP Practice April 2013 – January 2020.

The 2021 Cornwall Public Health Annual report estimates that the Cornwall population will grow by an additional 11% from 2019 – 2039. These figures demonstrate how essential it is that the GP service can expand to meet the additional demand.

In 2018 there was a walk-in surgery based at Cardrew which was to be related to the community hospital at Barncoose. This closed in 2019.

## **Work**

Economic activity figures in the 2021 census show that **58.1%** are employed (UK average of 57.4%), 2.7% are unemployed (UK average of 3.5%) & 39.2% are economically inactive (UK average of 39.2%).

844 children aged 0-19 (24%) are in relative low-income families in Redruth Parish compared with 20% across England.

Occupation information from the 2021 census is:-

- Managers, directors and senior officials **10.7%** (UK average of 12.9%)
- Professional occupations **12.8%** (UK average of 20.3%)
- Associate professional and technical occupations **10.8%** (UK average of 13.3%)
- Administrative and secretarial occupations **9.4%** (UK average of 9.3%)
- Skilled trades occupations **14.1%** (UK average of 10.2%)
- Caring, leisure and other service occupations **13.7%** (UK average of 9.3%)
- Sales and customer service occupations **9.2%** (UK average of 7.5%)
- Process, plant and machine operatives **8.0%** (UK average of 6.9%)
- Elementary occupations **11.2%** (UK average of 10.5%)

### Travel to Work

Travel to work information from the **2021 census** shows that :-

- 62% of employees drive to work (UK average of 44.5%), another 5.1% are passengers, (UK average of 3.9%)
- 9% walk, (UK average of 7.6%)
- 1.2 % cycle, (UK average of 2.1%)
- 0.8% motorbike, (UK average of 0.5%)
- 3.2% public transport. (UK average of 6.3%)
- **17.4% work from home, (UK average of 31.5%)**

**18%** of households don't own a car in 2021 census. (UK average of 23.5%)

**How Redruth Residents travel to work 2018?** Information was obtained from *EXPERIAN POPULATION & EXPENDITURE DATA & EXTRACT FROM RETAIL PLANNER* available in the Roseworthy Hill Planning Application Information PA18/06111

What	Number	% (rounded)
<b>All residents aged 16-74 in employ. (exc. FT student in SC, NI)</b>	<b>5,398</b>	<b>100%</b>
Driving a car or van	3,658	68%
On foot	680	13%
Passenger in a car or van	397	7%
<b>Work mainly at or from home</b>	<b>222</b>	<b>4%</b>
Bus, minibus or coach	163	3%
Train	80	1.5%
Bicycle	79	1.5%
Motorcycle, scooter or moped	73	1.3%
Other method of travel to work	34	0.6%
Taxi	11	0.2%

This data shows the substantial increase in working from home from 2018 to 2021. It is still below the national average, probably due to the nature of Redruth employment.

### Employment Space built in Redruth Parish 2010 – 2022

**19,853 sqm** of new employment space has been built in Redruth in that time period.

Site Name	Description	Size of Development	Office/ industrial / Other
Kresen Kernow	Opened in 2019,	4,242sqm	Other
Krowji Phase 1	The Phase 1 Percy Williams development opened in 2015. The 2 new buildings have a BREEAM 'Excellent'	2,238sqm	Office
Krowji Phase 2	Phase 2 began in 2019 and completed in November 2020 to a BREEAM Excellent rating.	2,026sqm	Office
The Elms	The Elms is a formally redundant building & provides office space, facilities for voluntary, community and social enterprises to share. Opened in 2011	436 sqm	Office
Treleigh Park (Plot 1)	Construction of 2,790 sqm of BREEAM Excellent speculative employment space.	2,790 sqm	Industrial & Office
Treleigh Plot 2	Construction of 800sqm of space	800 sqm	Industrial & Office
Treleigh Plot 4	Construction of 2,371 of space	2,371 sqm	Industrial & Office
Treleigh Plot 5	Construction of 1,190 of space	1,190 sqm	Industrial & Office
Treleigh Plot 6	Construction of a hybrid industrial unit comprising office accommodation & production space & is BREEAM Excellent.	871 sqm	Industrial & Office
Treleigh Plots 7 & 8	Four flexible factory units built to a BREEAM excellent standard.	2,806 sqm	Industrial & Office
Wheal Harmony	The site has delivered 547 sqm of high quality light industrial space & 2 x 164.8sqm office buildings.	876 sqm	Industrial & Office
Parc Erissey	Plot 21 (ex Barton House). 5 x industrial/ warehouse units for B8 use, opened in 2020 as Amazon Depot.	1,718 sqm	Industrial & Office
<b>Totals</b>		<b>19,853 sqm</b>	

Table 4 Employment Space built in Redruth Parish 2010 – 2022

### **Housing**

A detailed analysis of permissions & completions was undertaken in October 2020. This indicated that Redruth was on target to reach housing numbers within the plan period if permissions were developed. There is an issue with some stalled sites.

Status of the Redruth Housing	Total	Market House (OM)	Afford House (AH)	Notes OM – Open Market AH – Affordable Housing
Completions (end of March 2020)	922	624	298	Built from 2011- 2020 in Redruth Parish.
Permissions (full) end of March	596	475	121	61 of these were considered stalled in 2020. This figure now is higher, but hasn't been quantified.
Outline permissions (end of March 2020)	383	356	27	This includes 160 for Brewery & 158 OM & 27 AH for Tolgus
Decision pending (planning apps)	30	9	21	This is an approximate figure – single dwellings have not been reviewed.

Status of the Redruth Housing	Total	Market House (OM)	Afford House (AH)	Notes OM – Open Market AH – Affordable Housing
Pre-app	34	34	0	Trengweath, 34 Fore Street, Old Fire station,
<b>Totals</b>	<b>1965</b>	<b>1498</b>	<b>467</b>	These totals include everything
<b>Totals (excluding Brewery &amp; stalled sites)</b>	<b>1744</b>	<b>1277</b>	<b>467</b>	

Table 5 Status of Redruth Housing Builds in 2022.

**Housing Permission & Completion Figures from Cornwall Council (2018) Table 6**

CPIR Housing Numbers since 2010 (at October 2018) for the Urban area	Numbers
Housing completed since 2010	2,000
Houses permitted but not yet completed	2,600
Windfall sites expected to come forward (estimate)	500
Total for CPIR area	5,100

The additional 100 houses are expected to come through small developments. Table 7

Tolgus (land now owned by CC is the major housing site for Redruth NP)	Numbers
Number of homes in the masterplan	650
Phase 1 – number of homes permitted	375
Phase 2 – number of homes allocated but not yet permitted	280
Total Tolgus figures	655

### Redruth Housing Stock Totals in 2017

Evidence from EXPERIAN POPULATION & EXPENDITURE DATA 2017 & EXTRACT FROM RETAIL PLANNER

	Number	% (rounded)
<b>Redruth Housing Stock (Total)</b>	5,520	100%
Whole house or bungalow: Detached	1,222	22%
Whole house or bungalow: Semi-detached	1,460	26%
Whole house or bungalow: Terraced (Inc. end-terrace)	1,798	33%
Flat etc.: Purpose-built block of flats or tenement	705	13%
Part of converted/shared house (in. bed-sits)	252	5%
Flat etc.: In a commercial building	79	1%
Caravan or other mobile or temporary structure	5	0%
Household spaces with at least one usual resident (i.e. occupied)	5,173	94%
Household spaces with no usual residents (i.e. Vacant)	347	6%
All household spaces with at least one usual resident	5,173	100%
1 person in household	1,702	33%
2 people in household	1,781	34%
3 people in household	803	16%
4 people in household	609	12%
5 people in household	193	4%
6 people in household	65	1%
7 people in household	12	0.23%
8 or more people in household	7	0.13%

## Ownership of housing stock

Evidence from EXPERIAN POPULATION & EXPENDITURE DATA 2017 & EXTRACT FROM RETAIL PLANNER

All households	5,173	100%
Owned: Total - Including shared ownership	3,191	62%
Owned: Total - Excluding shared ownership	3,166	61%
Owned: Owned outright	1,527	30%
Owned: Owned with a mortgage or loan	1,639	32%
Shared ownership (part owned, and part rented)	25	0.5%
Social rented: Total	789	15%
Social rented: Rented from council (Local Authority)	255	5%
Social rented: Other social rented	534	10%
Private rented: Total	1,113	22%
Private rented: Private landlord or letting agency	1,028	20%
Private rented: Employer of a household member	4	0%
Private rented: Relative or friend of household member	67	1%
Private rented: Other	14	0%
Living rent free	80	1.5%

## Retail Expenditure for Redruth 2016

Evidence from EXPERIAN POPULATION & EXPENDITURE DATA 2017 & EXTRACT FROM RETAIL PLANNER. *All the figures quoted for Redruth are the lowest in the local area. Hayle, Camborne, & Pool were also reviewed.*

Total Expenditure (in 2016 prices)	£55,822,422	100%
Total Comparison ( <i>non-food shopping</i> )	£31,838,383	57%
Total Convenience ( <i>food &amp; drink etc</i> )	£23,984,039	43%
Total retail per household (2016)	£10,095	100%
Total Comparison (per household)	£5,758	57%
Total Convenience (per household)	£4,338	43%
Total food & non-alcoholic drinks (per household)	£2,939	29%
Total retail per person (2016)	£4,484	
Total Comparison (per person)	£2,558	
Total Convenience (per person)	£1,927	
Total food & non-alcoholic drinks (per person)	£1,306	
Restaurant & café meals	£5,302,853	
Alcoholic drinks away from home	£2,447,473	
Takeaway meals eaten at home	£1,484,805	
Other takeaway & snack food (e.g. ice-cream, drinks)	£1,478,449	
Contract catering (food)	£215,105	
Residential Homes	£21,452	
Home help	£273,370	
Nursery Creche & Playschools	£1,035,551	
Childcare payments	£1,796,484	
Funeral Expenses	£149,130	

All retail businesses in 2016 (Redruth)	£58,046,663	100%
Chemists	£2,689,728	5%
Confectioners, tobacconists, newsagents and supermarkets	£25,704,691	44%
Department stores	£7,363,871	13%
Other specialised stores	£15,051,596	26%
Retail sales not in stores	£5,050,720	9%
Second hand stores	£365,744	0.6%
Specialised food stores	£1,819,949	3%

#### **Where Redruth Residents do their shopping (from Household survey)**

##### **Convenience Market Share 2014 and 2018 – Main food shopping**

<b>Premises</b>	<b>2014</b>	<b>2018</b>
Aldi, Church Street, Camborne	6.6%	1.0%
Tesco, Wesley Street, Camborne	0%	1.2%
Lidl, Pool	8.7%	8.3%
Morrisons, Pool	15.3%	4.5%
Tesco Extra, Pool	8.4%	4.3%
Iceland, Fore Street, Redruth	5.8%	8.2%
Tesco, Tolgus Hill, Redruth	41.2%	36.3%
Aldi, Redruth	Not open	19.2%
Local shops, Redruth	0%	2.5%
Asda Penryn	3.2%	1.7%
Internet/Home delivery	6.8%	5.2%
Total	96.1%	92.5%

##### **Convenience Market Share 2014 and 2018 – Top-up food shopping**

<b>Premises</b>	<b>2014</b>	<b>2018</b>
Aldi, Church Street, Camborne	3.9%	0%
Lidl, Pool	7.4%	0%
Morrisons, Pool	5.3%	1%
Tesco Extra, Pool	6.5%	3.3%
Co-op, Fore Street, Redruth	10.9%	2.3%
Iceland, Fore Street, Redruth	13.7%	9.7%
Tesco, Tolgus Hill, Redruth	26.3%	23.1%
Aldi, Redruth	Not open	5.4%
Local shops, Redruth	16.5%	1.5%
Asda Penryn	0.9%	0%
Internet/Home delivery	0%	0.5%
Total	91.4%	46.7%

**Redruth Town Centre Table 8**

Operator	Net floorspace	Net convenience floorspace	Net comparison floorspace	Benchmark convenience goods sales density 2017 £/sqm	Benchmark convenience goods sales density 2018 £/sqm	Benchmark convenience goods turnover 2018 (£m)	Survey based turnover 2018 (from catchment) (£m)
Iceland	434	412	22	£6,396	£6,387	£2.63	£3.45
Others	1268	1141	127	£4,500	£4,496	£5.13	£1.16

*From the figures in Table 8, we can conclude that Iceland is busier than you would expect but the rest of Redruth Town Centre's retail space is trading at a quarter of the level you would expect.*

**Out of Centre Stores Table 9**

Operator	Net floorspace	Net convenience floorspace	Net comparison floorspace	Benchmark convenience goods sales density 2017 £/sqm	Benchmark convenience goods sales density 2018 £/sqm	Benchmark convenience goods turnover 2018 (£m)	Survey based turnover 2018 (from catchment) (£m)
Tesco	2183	1856	327	£12,221	£12,209	£22.66	£39.17
Aldi	1003	1003	251	£10,755	£10,744	£10.78	£14.90

*From the figures in Tables 8 & 9 we can see that the major retailers in Redruth are located outside the primary retail frontage area of the town centre. Tesco is within the town centre boundary, Aldi is not. Tesco has more Convenience floorspace than the whole town centre and is out-trading everyone. Both Tesco & Aldi are trading better than you would expect based on the survey information.*

*Tables 8 & 9 above: Floorspace figures from Cornwall Retail Study Update 2015 (Table 8) Benchmark convenience turnover obtained from Global Data (formerly Verdict) projected forward to 2018 using growth in convenience expenditure derived from Experian Retail Planner Briefing Note 15 (Dec 17)*

## Retail units

[Source: Cornwall Council Planning].

The table below shows the number of retail units in Redruth town 2017 - 2019. Overall numbers have been static, from 192 in 2017 to 190 in 2019. The service sector made up the largest component at 43.9% in 2019, followed by Comparison stores at 29.6%.

**Table 10**

Retail units by sector								
Sector	2017		2018		2019		Cornwall Average 2019	National Average 2018
	No	%	No	%	No	%		
Convenience	12	6.3	14	7.4	13	6.9	8.0	10
Comparison	57	29.7	55	29.1	56	29.6	38	36.9
Service	84	43.8	83	43.9	83	43.9	40.6	39
Vacant	36	18.8	34	18	35	18.5	12.6	12.9
Miscellaneous	3	1.6	3	1.6	3	1.6	0.8	1.5
Total	192	100	189	100	190	100	100	100

Note:

**Convenience stores** include: Bakers; Butchers; Fishmongers; Greengrocers; Delis, Health Food, Grocers, Frozen Food; Newsagent/Convenience & PO; Confectionary/Ice Cream Kiosk; Off Licence & Homebrew; Supermarket; Tobacconist Vape/ECig.



**Comparison stores** include: Footwear; Clothing, Accessories; Furniture, Carpets, Textiles, Antiques, Homeware; Books, Stationers, Cards, Toys, Jokes; DIY, Hardware, Household goods, Indoor Markets, Catalogue/ Discount Bric a Brac; Chemist, Health & beauty, Pharmacy, Perfumery, Skincare; Opticians/ Hearing specialist; Charity Shop; Florists & Pets & Gardening Supplies; Electrical, Computers, Office Supplies, Cameras; Art & Craft Supplies, Wool, Fabric, Dressmaking; Gifts, Craft & Retail Art Galleries; Outdoor, Camping, Fishing, Cycles, Mobility & Sports; Jewellery, Clocks & Repairs; Phone Shops, Accessories & Repairs; Car Showrooms, Car Parts, Car Hire (SG); Photos/Printing/Copying/Framers; Shoe repair, Engraving, Key Cutting, Locksmith; Music, Video, Gaming, DVD.

**Services include:** Restaurant / Café; Ice Cream Parlours, Milkshake & Sandwich Bars; Public Houses; Hot Food & Drink T/A; Banks & Building Societies; Estate Agents /Lettings & Property; Solicitors/ Accs./ Financial Advrs; Other Professional Services; Health & Beauty + Nails & Tanning; Barbers / Hairdressers; Betting, Pawn Shops & Amusement Arcades; Tattoo & Piercing Studios; Dry Cleaners/ Launderette; Travel Agents, Bus & Ferry Tickets; Funeral Directors.

**Retail vacancy rate:** Since the Cornwall Council Local Plan was published in 2016 retail has changed and less space is required. Cornwall Council monitors Cornwall's Town Centres on an annual basis and the results for Redruth in 2020 are given here. In 2013 the vacancy rate was 15.6% in Redruth, in 2020 it had increased to 20%.

Survey Year	A1	A2	A3	A4	A5	B1a	D1	D2	Vacant	Other	Total	% Vacancy	% Cornwall Vacant
2020	85	22	15	4	11	11	15	8	46	8	225	20.4	13.2
2019	93	24	14	5	11	11	16	8	35	8	225	15.6	11.2
2018	94	26	14	5	10	10	20	9	34	6	228	14.9	10.4
2017	91	28	15	6	9	8	17	10	36	7	227	15.9	9.6
2016	95	26	13	4	9	10	19	10	39	5	230	17	9.4
2015	91	29	13	4	10	10	19	10	47	6	239	19.7	9.1
2014	94	34	16	4	9	10	20	10	37	2	236	15.7	8.6
2013	97	34	13	5	9	12	17	11	37	2	237	15.6	8.4

Table 11: Town Centre Uses by Survey Year, including % vacancy rates.

### Car Parking Study 2022

Car Park Name	Owner	Spaces	Charges	Peak Occupancy Rates	Audit Rating
<b>New Cut Extension</b>	Cornwall Council	55 (including 4 disabled) + 1-2 coach spaces	Long Stay 0 - 4hr between £1.60 - £4.40, 24hr £5.10	60% Saturday + Weekday	Amber
<b>New Cut</b>	Cornwall Council	197 including 9 disabled, 6 motorbike + 7 private residential spaces	Short Stay 0 - 3hr between 80p - £3.70	38% Saturday /32% Weekday	Amber

Car Park Name	Owner	Spaces	Charges	Peak Occupancy Rates	Audit Rating
Iceland	Private	55 including 2 disabled + 4 motorbike spaces	Short Stay, 0 - 2hr between 50p - £1.00. Iceland refunds £1 on spend over £5.	92% Saturday / 96% Weekday	Green
Flowerpot Chapel	Cornwall Council	129 including 8 disabled, 3-4 motorbikes + 2 electric charge points	Long Stay, 0 - 4hr between 80p - £3.70, 24hr £5.10	77% Saturday + Weekday	Green
Fairmeadow	Private	145 spaces	Long Stay, 0 - 12hr between £1.50 - £3.00	22% Saturday + Weekday	Red
St Rumon	Private	36 spaces	Short Stay, 0 - 4hr between 50p - £3.00	75% Saturday / 61% Weekday	Amber
West End	Cornwall Council	85 spaces	Long Stay 24hr only £2.80	42% Saturday + Weekday	Red

Table 12: Summary of the 7 Car Parks in Redruth Town Centre reviewed in the July 2022 study.

## Education

**Evidence of Provision in Redruth Parish (2022).** Information is provided by Cornwall Council

Name	Address	Age range
Buzy Bees Pre-School	The Hive, Redruth TR16 4AY (at Treleigh)	2 years – 4 ½ years
Flying Start Redruth	Children's Centre 24 Drump Rd, Redruth TR15 1LU	0 years – 11 years
Little Stars Nursery	Warmstar House, Chapel Street, Redruth	1 years -5 years old
Lowen Harts	Gweal-an-top, School Lane, Redruth	0-5 years
Pennoweth Primary & Nursery School	Drump Road, Redruth	3 & 4 years old
Trewirgie Infants & Nursery	Trewirgie Road, Redruth TR15	3 & 4 years old
Windmill Nursery	Krowji, West Park, Redruth TR15 3AJ	0-5 years

Table 13: Nurseries in Redruth Parish in 2022

Name	Address	Age range
The Curnow School	Drump Road, Redruth, TR15	2 years – 19 years. A non-selective school for special educational needs and disability, offering 91 places.

Table 14: Specialist School in Redruth Parish

Name	Address	Age range & capacity
Pennoweth Primary & School	Drump Road, Redruth TR15	5 years to 11 years. Could be allowed 420 pupils max (i.e. 14 classes),
Treleigh Community Primary School	Treleigh Redruth TR16	5 years to 11 years 256 pupils in 2017. 255 should be maximum in 2018.

Trewirgie Infant & Junior School	Trewirgie Road, Redruth, TR15.	5 years to 11 years Could take up to 630 pupils max .
----------------------------------	--------------------------------	---

Table 15: Primary Schools in Redruth Parish in 2022

Name	Address	Age range & capacity
Redruth School	Tolgus Vean, Redruth TR15	11 years to 16 years. Capacity is 1,500 pupils

Table 16: Secondary School (but no sixth form) in Redruth Parish in 2022.

There is currently no 16+ education provision within Redruth Parish. Pupils aged 16+ travel to Pool, Camborne or Truro as appropriate.



# Redruth Economic Profile

**September 2021**

Produced by the **Economic Growth Service** for the CC Intelligence Network



If you would like this information in another format please contact:

**Economic Growth Service**

Email: [economicdevelopment@cornwall.gov.uk](mailto:economicdevelopment@cornwall.gov.uk)

Telephone: **0300 1234 100**

**[www.cornwall.gov.uk](http://www.cornwall.gov.uk)**

## Introduction

The following report provides economic data from several sources for the town of Redruth. Headline data is provided covering: population; employees; household income; deprivation; house prices; broadband; vacancies; claimant count (unemployment) and Universal Credit. The Cornwall Council Intelligence Network also produces analysis on other data (e.g. health and education) which can be accessed at the following: -

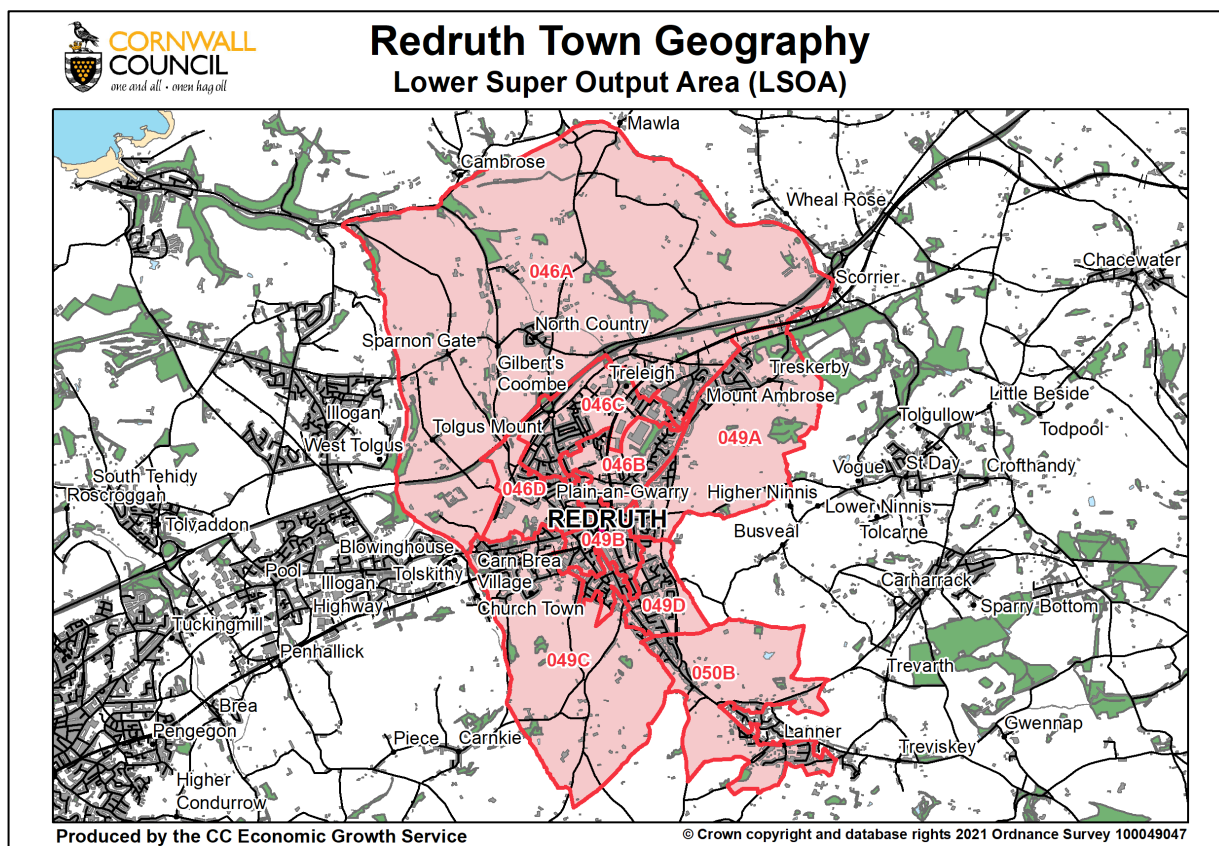
- [The Cornwall We Know | Let's Talk Cornwall](#)
- [COVID-19 Insights Dashboard](#)
- [Public Health – Annual Report](#)
- [Safer Cornwall – Document Library](#)
- [Housing Intelligence](#)

If the links above do not provide the required level of detail or spatial coverage then please contact the Intelligence Network - [performance@cornwall.gov.uk](mailto:performance@cornwall.gov.uk) to discuss whether there are alternative data sources that may be of use.

## Geographies

The data for Redruth in this report is mainly based on Lower Layer Super Output Area (LSOA) and Middle Layer Super Output Area (MSOA). The maps below show the geographies identified as the towns best fit.

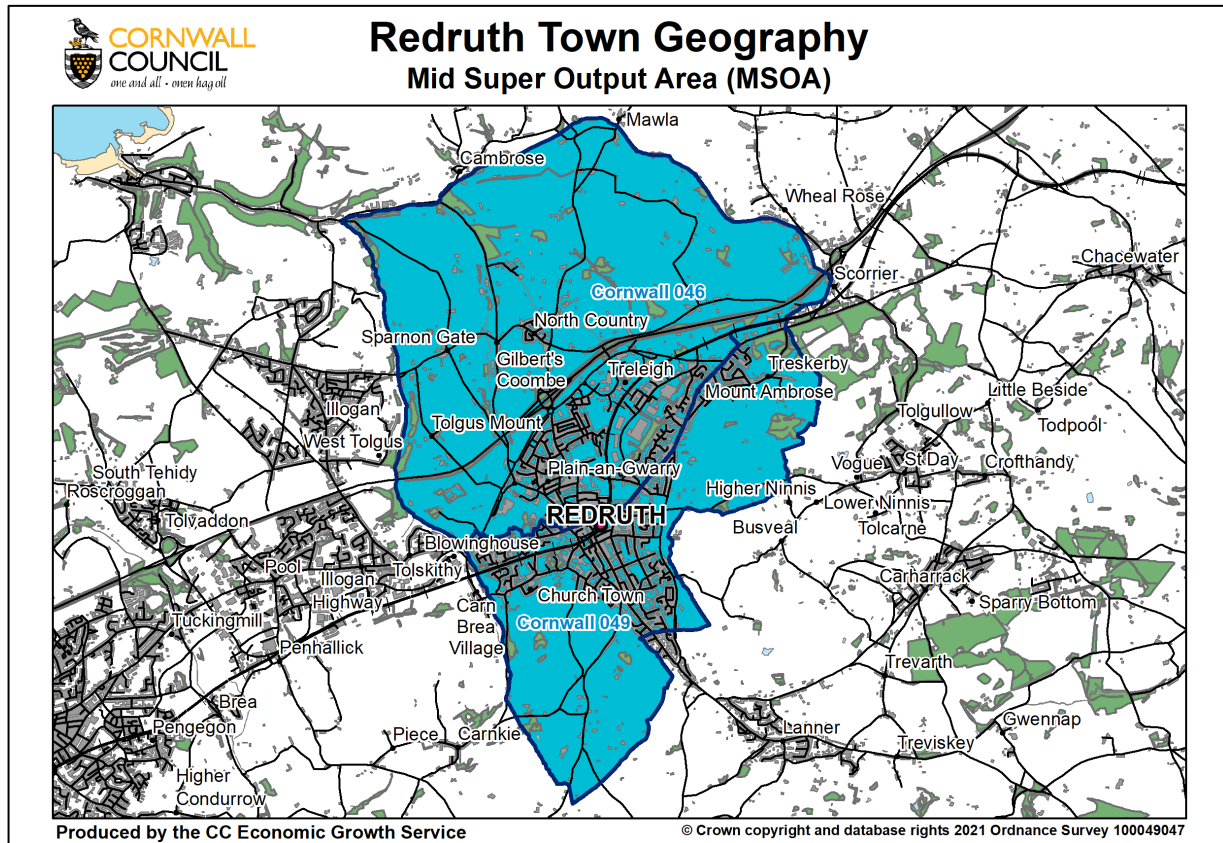
### Lower Layer Super Output Area



### Redruth LSOA

LSOA	LSOA Name	Local Name
E01018908	Cornwall 046A	North Country, Radnor and Sparnon Gate
E01018909	Cornwall 046B	Drump Road and Cardrew
E01018910	Cornwall 046C	Redruth North, Close Hill, Strawberry Fields and Treleigh
E01018911	Cornwall 046D	Redruth Tolgus Hill and Plain-an-Gwarry
E01018912	Cornwall 049A	Redruth Sandy Lane and Treskerby
E01018913	Cornwall 049B	Redruth Train Station and Victoria Park
E01018914	Cornwall 049C	Redruth Buller Hill and Churchtown
E01018915	Cornwall 049D	Redruth Albany Gardens and Clinton Road
E01018917	Cornwall 050B	Lanner West and South Downs

## Middle Layer Super Output Area



### Redruth MSOA

MSOA	MSOA Name	Local Name
E02003919	Cornwall 046	Redruth North
E02003920	Cornwall 049	Redruth South

## Parliamentary Constituency

Some data is only available at UK Parliamentary Constituency level. The town of Redruth is located in the [Camborne and Redruth Constituency](#).

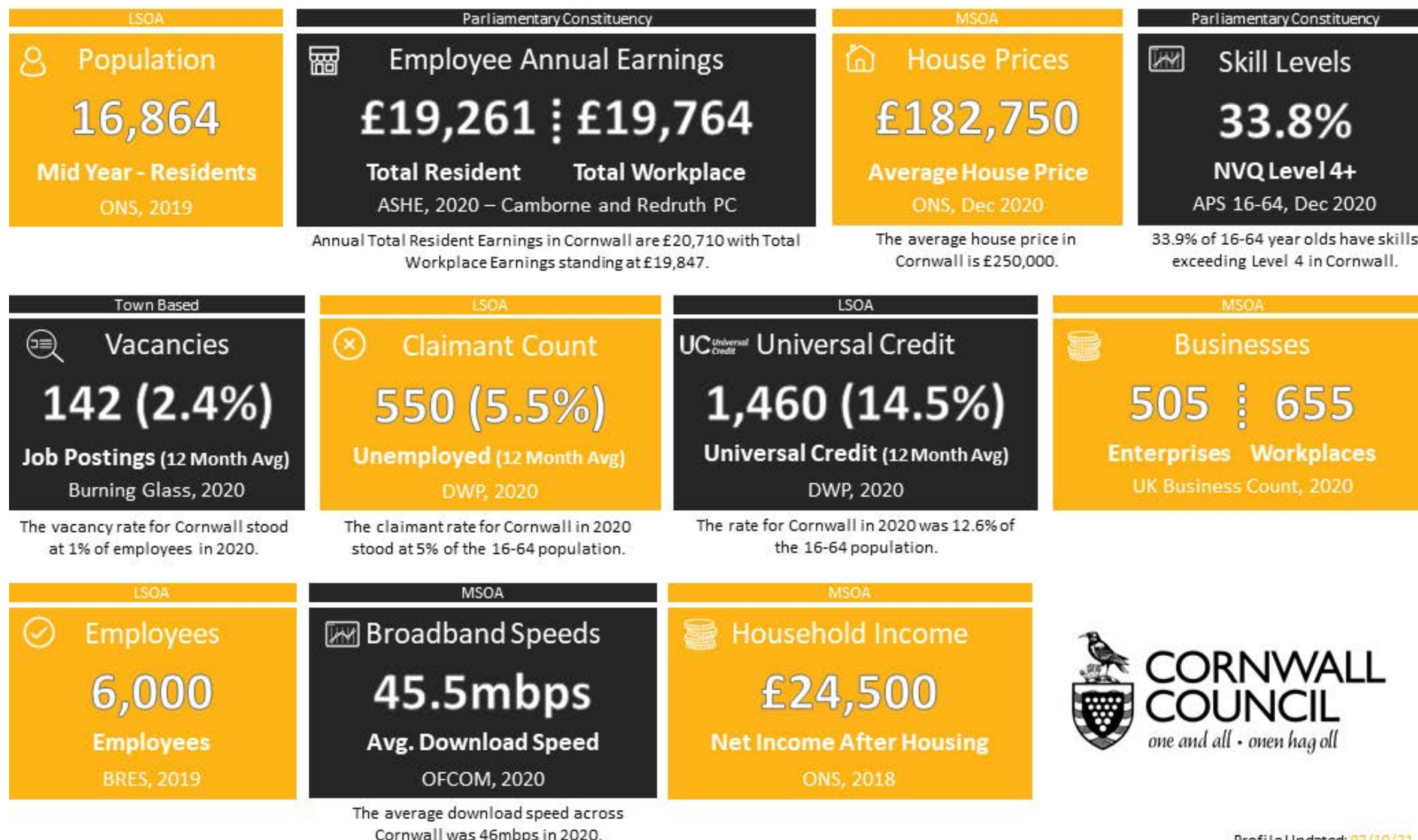


# Redruth Data Profile

a breakdown of **Economic Indicators** for the Town of Camborne

Profile produced by the **Economic Growth Service** at Cornwall Council

Please note an LSOA Geography has been prioritised where data exists.



Profile Updated: 07/10/21



## Employment

Data from the 2011 census provides a picture of which sectors both the residents and the workforce of Redruth were employed in. Census figures include both employees and the self-employed, whereas the Business Register and Employment Survey is solely employees.

Redruth and Cornwall - Employment Sector Share						
	Redruth			Cornwall		
	Residents 2011	Workplace 2011 <sup>1</sup>	Employees 2019*	Residents 2011	Workplace 2011 <sup>1</sup>	Employees 2019*
Sector	%	%	%	%	%	%
Agriculture, forestry & fishing	0.9	0.4	0.0 <sup>2</sup>	3.0	3.1	2.1 <sup>2</sup>
Mining & quarrying	0.4	0.2	0.2	0.7	0.6	0.4
Manufacturing	10.7	15.0	16.7	7.9	7.8	7.0
Energy	0.6	0.3	0.0	0.4	0.3	0.3
Water & waste	1.3	0.9	2.5	0.8	0.8	0.7
Construction	9.3	10.9	13.3	9.0	9.1	6.5
Wholesale, retail & motors	18.2	15.5	25.0	16.8	17.4	19.1
Transportation & storage	3.7	3.7	5.8	3.7	3.6	2.8
Accommodation & food services	6.2	5.3	7.5	9.2	9.5	15.3
Information & communication	1.3	2.4	3.3	1.7	1.7	1.6
Financial & insurance	1.3	1.3	0.4	1.5	1.5	0.9
Real estate	1.1	1.1	1.2	1.4	1.4	1.9
Professional, scientific & technical	4.0	4.5	5.0	4.7	4.6	5.6
Administrative & support services	4.9	4.2	2.5	4.3	4.4	6.0
Public administration etc.	6.1	7.5	0.8	6.3	5.8	3.3
Education	9.1	9.8	7.5	9.7	9.6	7.9
Health & social work	16.8	13.4	11.7	13.5	13.4	14.4
Other services	4.2	3.6	3.4	5.3	5.4	4.7
	<b>100.0</b>	<b>100.0</b>	<b>100.0</b>	<b>100.0</b>	<b>100.0</b>	<b>100</b>

Source: NOMIS, Census 2011 – Columns marked (\*) are from the Business Register and Employment Survey (BRES) so are not a direct comparison to the Census figures. Sector percentages may not sum to 100% due to rounding. More detail is available providing the specific numbers employed in each sector.

<sup>1</sup> Workplace census figures use a Workplace Zone geography these do not always match the LSOA boundaries.

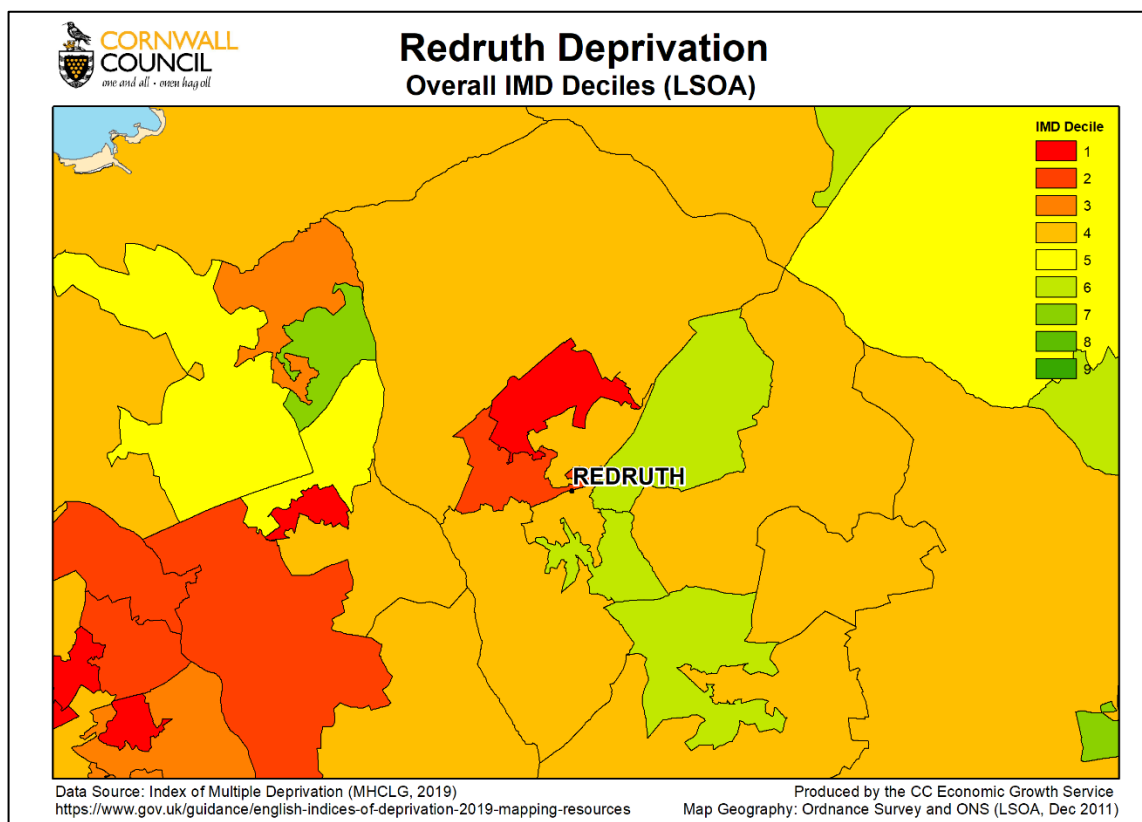
<sup>2</sup> These figures exclude farm agriculture (SIC subclass 01000).

## Deprivation (IMD)

The Indices of Multiple Deprivation (IMD) is a dataset produced to classify the relative deprivation (essentially a proxy for poverty) of small areas across England.

IMD deciles are calculated where 1 is the most deprived 10% of LSOAs and 10 the least deprived 10% of LSOA's in England. This is the same for rank with 1 being the most deprived in England and 32,844 the least deprived neighbourhood.

Redruth IMD Breakdown									
LSOA	Overall IMD Rank	Overall IMD Decile	Income Decile	Employment Decile	Education Decile	Health Decile	Crime Decile	Housing Decile	Living Env Decile
Cornwall 046A	12494	4	5	4	4	5	8	2	2
Cornwall 046B	11654	4	5	4	5	3	4	7	1
Cornwall 046C	1072	1	1	1	1	1	6	7	6
Cornwall 046D	5314	2	2	1	4	2	4	8	2
Cornwall 049A	18098	6	6	5	5	6	8	7	3
Cornwall 049B	11341	4	4	3	7	4	7	9	1
Cornwall 049C	12446	4	4	4	5	4	6	5	3
Cornwall 049D	19202	6	5	5	6	7	10	6	5
Cornwall 050B	17655	6	6	5	7	5	8	9	1



## Economic Data Sources

List of Data Sources Available for Redruth				
Data	Source	Frequency	Geography	In Profile
Broadband Speeds	Connected Nations, OFCOM	3 x a Year	MSOA	More Detail Available
Car ownership	Census 2011, ONS	Census	LSOA	No
Claimant Count	Claimant Count, NOMIS	Monthly	LSOA	Yes
Commuting	Census 2011, ONS	Census	LSOA	No
Deprivation	Index of Multiple Deprivation, MHCLG	Irregular	LSOA	Yes
Dwellings	Census 2011, ONS	Census	LSOA	No
Earnings	ASHE, NOMIS	Annual	Parliamentary Constituency	Yes
Economic activity	Census 2011, ONS	Census	LSOA	No
Employment	Census 2011, ONS	Census	LSOA	More Detail Available
Employment	Business Register and Employment Survey, ONS	Annual	LSOA	More Detail Available
Employment - workplace	Census 2011, ONS	Census	LSOA	More Detail Available
Enterprises	UK Business Activity	Annual	MSOA	More Detail Available
House prices	HPSSA table 46, ONS	Quarterly	LSOA	More Detail Available
Household income	Income estimates for small areas, ONS	Irregular	MSOA	Yes
Household spaces	Census 2011, ONS	Census	LSOA	No
Population	Mid-Year Population Estimates by Small Areas, ONS	Annual	LSOA	Yes
Qualifications	Census 2011, ONS	Census	LSOA	No
Skills	APS, NOMIS	Annual	Parliamentary Constituency	More Detail Available
Travel to work	Census 2011, ONS	Census	LSOA	No
Universal Credit	Claimant statistics, DWP	Monthly	LSOA	More Detail Available
Vacancies	Labour Market Insight, Burning Glass	Quarterly	Town	More Detail Available
Vacancy salaries	Labour Market Insight, Active Informatics	Quarterly/Annual	Town	No
Workplaces	UK Business Activity	Annual	MSOA	More Detail Available