



# Redruth Economic Profile

**September 2021**

Produced by the **Economic Growth Service** for the CC Intelligence Network



If you would like this information in another format please contact:

**Economic Growth Service**

Email: [economicdevelopment@cornwall.gov.uk](mailto:economicdevelopment@cornwall.gov.uk)

Telephone: **0300 1234 100**

[www.cornwall.gov.uk](http://www.cornwall.gov.uk)

## Introduction

The following report provides economic data from several sources for the town of Redruth. Headline data is provided covering: population; employees; household income; deprivation; house prices; broadband; vacancies; claimant count (unemployment) and Universal Credit. The Cornwall Council Intelligence Network also produces analysis on other data (e.g. health and education) which can be accessed at the following: -

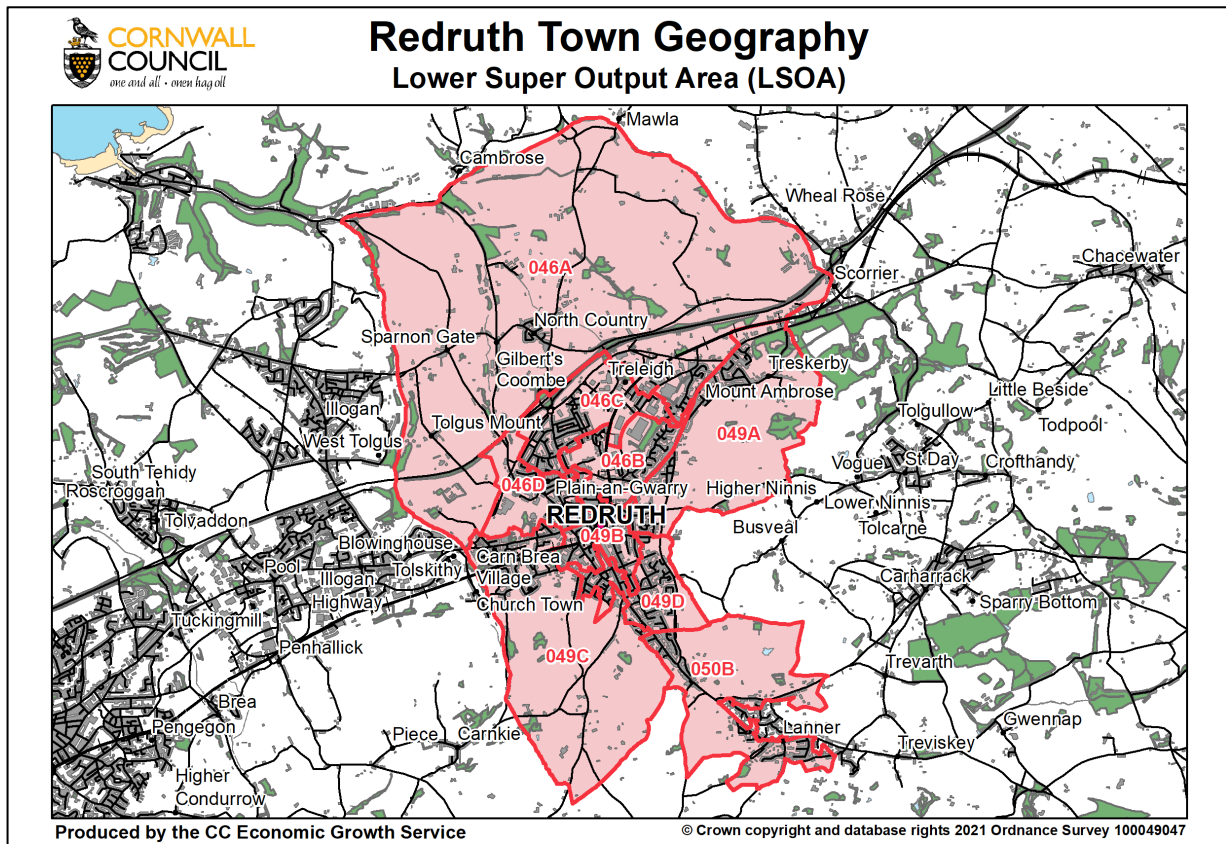
- [The Cornwall We Know | Let's Talk Cornwall](#)
- [COVID-19 Insights Dashboard](#)
- [Public Health – Annual Report](#)
- [Safer Cornwall – Document Library](#)
- [Housing Intelligence](#)

If the links above do not provide the required level of detail or spatial coverage then please contact the Intelligence Network - [performance@cornwall.gov.uk](mailto:performance@cornwall.gov.uk) to discuss whether there are alternative data sources that may be of use.

## Geographies

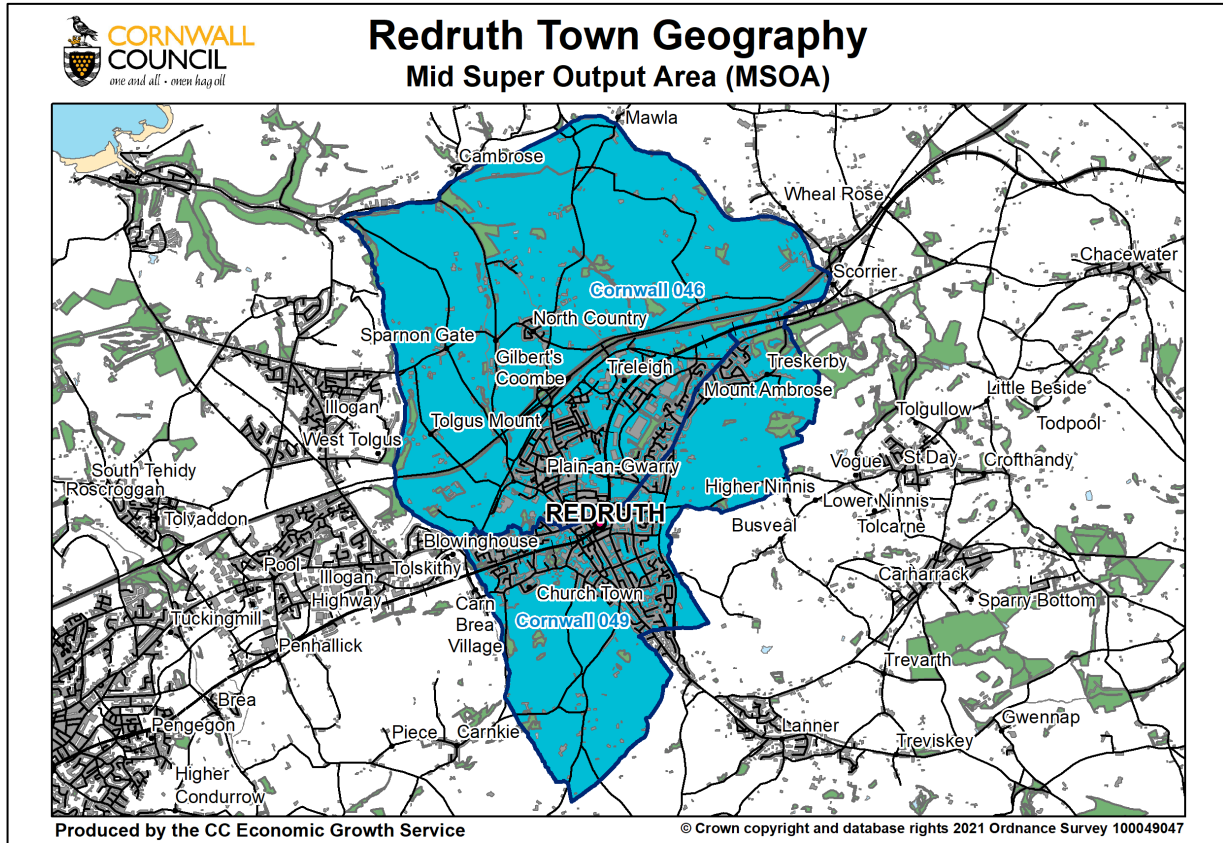
The data for Redruth in this report is mainly based on Lower Layer Super Output Area (LSOA) and Middle Layer Super Output Area (MSOA). The maps below show the geographies identified as the towns best fit.

### Lower Layer Super Output Area



Redruth LSOA		
LSOA	LSOA Name	Local Name
E01018908	Cornwall 046A	North Country, Radnor and Sparnon Gate
E01018909	Cornwall 046B	Drump Road and Cardrew
E01018910	Cornwall 046C	Redruth North, Close Hill, Strawberry Fields and Treleigh
E01018911	Cornwall 046D	Redruth Tolgus Hill and Plain-an-Gwarry
E01018912	Cornwall 049A	Redruth Sandy Lane and Treskerby
E01018913	Cornwall 049B	Redruth Train Station and Victoria Park
E01018914	Cornwall 049C	Redruth Buller Hill and Churchtown
E01018915	Cornwall 049D	Redruth Albany Gardens and Clinton Road
E01018917	Cornwall 050B	Lanner West and South Downs

## Middle Layer Super Output Area



Redruth MSOA		
MSOA	MSOA Name	Local Name
E02003919	Cornwall 046	Redruth North
E02003920	Cornwall 049	Redruth South

## Parliamentary Constituency

Some data is only available at UK Parliamentary Constituency level. The town of Redruth is located in the [Camborne and Redruth Constituency](#).



# Redruth Data Profile

a breakdown of **Economic Indicators** for the Town of Camborne

Profile produced by the **Economic Growth Service** at Cornwall Council

Please note an **LSOA Geography** has been prioritised where data exists.

LSOA


 Population

**16,864**

Mid Year - Residents

ONS, 2019

Parliamentary Constituency

 Employee Annual Earnings

**£19,261 : £19,764**

Total Resident Total Workplace

ASHE, 2020 – Camborne and Redruth PC

MSOA

 House Prices

**£182,750**

Average House Price

ONS, Dec 2020

Parliamentary Constituency

 Skill Levels

**33.8%**

NVQ Level 4+

APS 16-64, Dec 2020

Annual Total Resident Earnings in Cornwall are £20,710 with Total Workplace Earnings standing at £19,847.

The average house price in Cornwall is £250,000.

33.9% of 16-64 year olds have skills exceeding Level 4 in Cornwall.

Town Based

 Vacancies

**142 (2.4%)**

Job Postings (12 Month Avg)

Burning Glass, 2020

LSOA


 Claimant Count

**550 (5.5%)**

Unemployed (12 Month Avg)

DWP, 2020

LSOA

 Universal Credit

**1,460 (14.5%)**

Universal Credit (12 Month Avg)

DWP, 2020

MSOA

 Businesses

**505 : 655**

Enterprises Workplaces

UK Business Count, 2020

The vacancy rate for Cornwall stood at 1% of employees in 2020.

The claimant rate for Cornwall in 2020 stood at 5% of the 16-64 population.

The rate for Cornwall in 2020 was 12.6% of the 16-64 population.

LSOA


 Employees

**6,000**

Employees

BRES, 2019

MSOA

 Broadband Speeds

**45.5mbps**

Avg. Download Speed

OFCOM, 2020

MSOA

 Household Income

**£24,500**

Net Income After Housing

ONS, 2018

The average download speed across Cornwall was 46mbps in 2020.



Profile Updated: 07/10/21

## Employment

Data from the 2011 census provides a picture of which sectors both the residents and the workforce of Redruth were employed in. Census figures include both employees and the self-employed, whereas the Business Register and Employment Survey is solely employees.

Redruth and Cornwall - Employment Sector Share						
Sector	Redruth			Cornwall		
	Residents 2011	Workplace 2011 <sup>1</sup>	Employees 2019*	Residents 2011	Workplace 2011 <sup>1</sup>	Employees 2019*
	%	%	%	%	%	%
Agriculture, forestry & fishing	0.9	0.4	0.0 <sup>2</sup>	3.0	3.1	2.1 <sup>2</sup>
Mining & quarrying	0.4	0.2	0.2	0.7	0.6	0.4
Manufacturing	10.7	15.0	16.7	7.9	7.8	7.0
Energy	0.6	0.3	0.0	0.4	0.3	0.3
Water & waste	1.3	0.9	2.5	0.8	0.8	0.7
Construction	9.3	10.9	13.3	9.0	9.1	6.5
Wholesale, retail & motors	18.2	15.5	25.0	16.8	17.4	19.1
Transportation & storage	3.7	3.7	5.8	3.7	3.6	2.8
Accommodation & food services	6.2	5.3	7.5	9.2	9.5	15.3
Information & communication	1.3	2.4	3.3	1.7	1.7	1.6
Financial & insurance	1.3	1.3	0.4	1.5	1.5	0.9
Real estate	1.1	1.1	1.2	1.4	1.4	1.9
Professional, scientific & technical	4.0	4.5	5.0	4.7	4.6	5.6
Administrative & support services	4.9	4.2	2.5	4.3	4.4	6.0
Public administration etc.	6.1	7.5	0.8	6.3	5.8	3.3
Education	9.1	9.8	7.5	9.7	9.6	7.9
Health & social work	16.8	13.4	11.7	13.5	13.4	14.4
Other services	4.2	3.6	3.4	5.3	5.4	4.7
	<b>100.0</b>	<b>100.0</b>	<b>100.0</b>	<b>100.0</b>	<b>100.0</b>	<b>100</b>

Source: NOMIS, Census 2011 – Columns marked (\*) are from the Business Register and Employment Survey (BRES) so are not a direct comparison to the Census figures. Sector percentages may not sum to 100% due to rounding. More detail is available providing the specific numbers employed in each sector.

<sup>1</sup> Workplace census figures use a Workplace Zone geography these do not always match the LSOA boundaries.

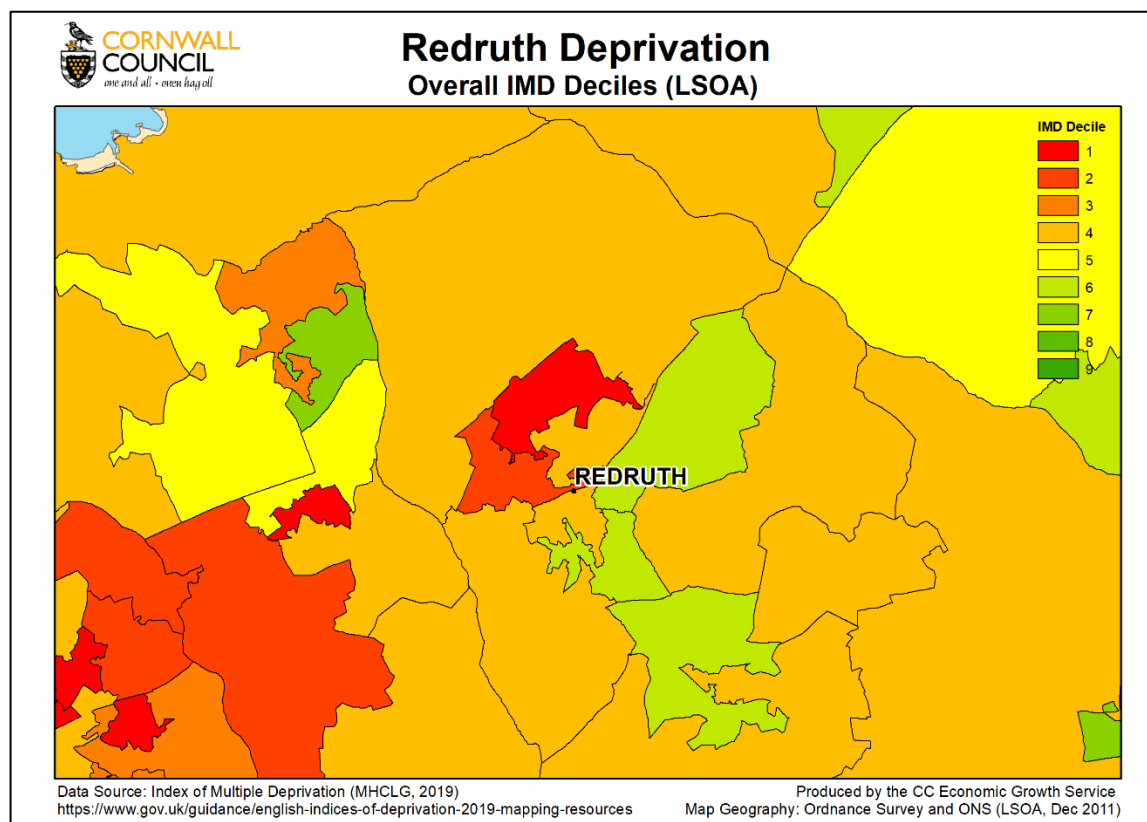
<sup>2</sup> These figures exclude farm agriculture (SIC subclass 01000).

## Deprivation (IMD)

The Indices of Multiple Deprivation (IMD) is a dataset produced to classify the relative deprivation (essentially a proxy for poverty) of small areas across England.

IMD deciles are calculated where 1 is the most deprived 10% of LSOAs and 10 the least deprived 10% of LSOA's in England. This is the same for rank with 1 being the most deprived in England and 32,844 the least deprived neighbourhood.

Redruth IMD Breakdown									
LSOA	Overall IMD Rank	Overall IMD Decile	Income Decile	Employment Decile	Education Decile	Health Decile	Crime Decile	Housing Decile	Living Env Decile
Cornwall 046A	12494	4	5	4	4	5	8	2	2
Cornwall 046B	11654	4	5	4	5	3	4	7	1
Cornwall 046C	1072	1	1	1	1	1	6	7	6
Cornwall 046D	5314	2	2	1	4	2	4	8	2
Cornwall 049A	18098	6	6	5	5	6	8	7	3
Cornwall 049B	11341	4	4	3	7	4	7	9	1
Cornwall 049C	12446	4	4	4	5	4	6	5	3
Cornwall 049D	19202	6	5	5	6	7	10	6	5
Cornwall 050B	17655	6	6	5	7	5	8	9	1



## Economic Data Sources

List of Data Sources Available for Redruth				
Data	Source	Frequency	Geography	In Profile
Broadband Speeds	Connected Nations, OFCOM	3 x a Year	MSOA	More Detail Available
Car ownership	Census 2011, ONS	Census	LSOA	No
Claimant Count	Claimant Count, NOMIS	Monthly	LSOA	Yes
Commuting	Census 2011, ONS	Census	LSOA	No
Deprivation	Index of Multiple Deprivation, MHCLG	Irregular	LSOA	Yes
Dwellings	Census 2011, ONS	Census	LSOA	No
Earnings	ASHE, NOMIS	Annual	Parliamentary Constituency	Yes
Economic activity	Census 2011, ONS	Census	LSOA	No
Employment	Census 2011, ONS	Census	LSOA	More Detail Available
Employment	Business Register and Employment Survey, ONS	Annual	LSOA	More Detail Available
Employment - workplace	Census 2011, ONS	Census	LSOA	More Detail Available
Enterprises	UK Business Activity	Annual	MSOA	More Detail Available
House prices	HPSSA table 46, ONS	Quarterly	LSOA	More Detail Available
Household income	Income estimates for small areas, ONS	Irregular	MSOA	Yes
Household spaces	Census 2011, ONS	Census	LSOA	No
Population	Mid-Year Population Estimates by Small Areas, ONS	Annual	LSOA	Yes
Qualifications	Census 2011, ONS	Census	LSOA	No
Skills	APS, NOMIS	Annual	Parliamentary Constituency	More Detail Available
Travel to work	Census 2011, ONS	Census	LSOA	No
Universal Credit	Claimant statistics, DWP	Monthly	LSOA	More Detail Available
Vacancies	Labour Market Insight, Burning Glass	Quarterly	Town	More Detail Available
Vacancy salaries	Labour Market Insight, Active Informatics	Quarterly/ Annual	Town	No
Workplaces	UK Business Activity	Annual	MSOA	More Detail Available